

Items **Accepted** at ODC:



	Price
Computer Towers*, Desk Top Copiers, Cables, External Drives, Keyboards, Laptops, Mice, Modems, Desk Top Printers, Scanners, Splitters	<b>No Charge</b>
Microwaves, Televisions or Monitors - LCD/LED and CRT/tube type - 27" or smaller	\$10.00 each
Televisions or Monitors - CRT/tube type - Larger than 27" and all Console Televisions	\$30.00 each
Full Size Copiers/Printers and Projection TV's	\$55.00 each

\*A \$7.00 fee applies if hard drive destruction is requested. A **certificate of destruction** will be mailed upon completion of destruction.

\* Volume discounts may apply

\* Prices subject to change

ODC Will Also **Accept** at No Cost:

- Phones (including cell)
- Fax machines
- Pagers
- Small/Medium Servers  
*Fees apply for larger servers*

Items can be dropped at the Main Entrance of ODC's facilities **Monday through Friday** from **8am to 3pm.**

Fees are payable at time of drop off.

**Make checks payable to ODC.**



For more information about ODC's

**Electronic Recycling Program**

Chuck Summers Email: [csommers@odcinc.com](mailto:csommers@odcinc.com)

ODC - Wisconsin Rapids  
1191 Huntington Avenue  
Wisconsin Rapids, WI 54494  
Phone: 715-424-2750 ext 7122

ODC - Marshfield  
2406 East 21st Street  
Marshfield, WI 54449  
Phone: 715-387-4682 ext 234



Connect with Facebook  
Opportunity Development Centers

[www.odcinc.com](http://www.odcinc.com)

Updated January 2011

ELECTRONIC  
RECYCLING  
PROGRAM AT **ODC**



ODC is a **Wisconsin Registered E-Cycle Collector and Recycler.**



## ODC is a Wisconsin Registered E-Cycle Collector and Recycler.



### THE LAW

Wisconsin's electronics recycling law establishes a collection and recycling system in Wisconsin for certain consumer electronic devices discarded by households and K-12 public schools, and bans landfilling or incineration of these devices in Wisconsin.

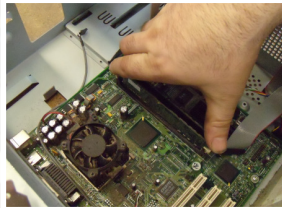
Under the law, manufacturers may not sell covered electronic devices (CEDs) to Wisconsin households or K-12 public schools unless that manufacturer does the following:

- Registers annually with the DNR and reports its recycling target for the program year
- Arranges for the collection and recycling of eligible electronic devices
- Submits required reports
- Pays program fees

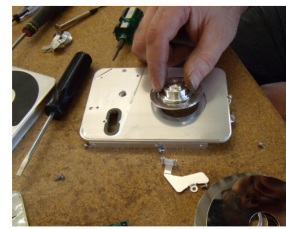
Wisconsin's electronics recycling law bans the local landfills from accepting several types of electronics as of September 1, 2010. As a result, ODC and its partners are proud to provide central Wisconsin with a place to take these items.

To learn more about the ban visit [dnr.wi.gov/ecyclewisconsin](http://dnr.wi.gov/ecyclewisconsin).

ODC is proud to provide Central Wisconsin with an environmentally friendly option for disposal of electronic equipment.



Computer towers and equipment are disassembled on-site at ODC, and hard drives are removed.



After disassembly, parts are sent to our recycling partners through a down stream process for further processing. Partners of ODC's recycling program are *Midwest Recyclers, LLC* and *Express Recycling*, and are Wisconsin Registered E-Cycle Collectors and Recyclers.

ODC and our recyclers will break down your electronics, reuse or recycle safe materials, and properly manage hazardous chemicals or wastes. This successful partnership makes us a local recycling connection for all of central Wisconsin.



ODC will do local pick-ups for loads of 25 or more units. Pick-ups will be made by appointment only - loads need to be secured to a pallet or otherwise contained.

To make arrangements, contact ODC.

